



netCommander™ NPC-22/NPC2201

Dual-Function Remote Power Reboot & RS-232 Port Server



- 3 RS-232 Ports
- 2 Power Outlets
- Current Draw Monitor
- IP Access Control
- 3 Telnet Sessions
- Web Browsing
- Email Interacting
- SNMP/Trap
- AutoPing & Reboot
- Modem Interface
- Multi-Level Security
- Local RS-232 control

NPC-22/NPC2201 are integrated with remote power reboot, AC current monitoring (optional) and RS-232 serial console access management system. It makes your system development and diagnosis job much easier.

RS-232 Server - Transparently transmitting data bi-directionally, the device can simultaneously connect all serial ports from your equipment via TCP/IP networks. Each serial port has its own designated Telnet session so that it can be actively communicating autonomously with its own remote port. A main system Tenet is used for the device configuration and communicating with any one of two remote serial ports.

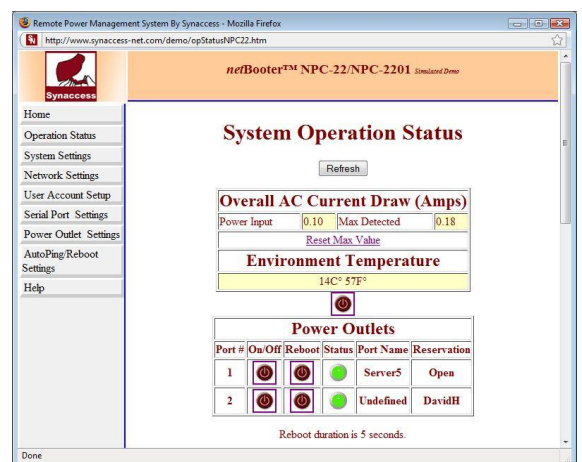
Power Reboot - The 2 power outlets are fully controlled via Telnet, Web, SNMP, emailing, local or via external Modem. The AutoPing feature enables the device to constantly monitor an IP address for a remote system and executes power reboot whenever the system is down. Each outlet has its own thread of AutoPing operation. In addition, each power outlet can be programmed to turn on/off periodically or be scheduled per calendar and clock.

Current Draw Monitoring (Optional) - It constantly collects aggregated True RMS current data from all power outlets. The current status is viewed from a web browser, Telnet terminals or SNMP object viewer. Alarm messages and TRAP messages will be sent or logged to a local file on the unit, if current draw passes user defined threshold.

Security - Accessing the system is password protected at Administration level or user privilege levels. Network security includes user name and password authentication (64-bit encryption Algorithm) for Web access or sending emails. NPC-22 offers the most versatile access control methods in the industry for easy, quick and reliable operations.

Features:

- Rugged small enclosure: 5.0"x6.75"x2.5".
- Handles large current equipment up to 13A, 100-240 VAC.
- 2 power outlets and 2 DB-9M (DTE) RS232 user console ports. Each power outlet and each console port is user name password protected.
- Current Draw Monitoring (Optional) for user to view AC current draw from all power outlets. It includes settings for user defined alarm threshold, alarm methods (Emails, TRAP, data log) and alarm message sending intervals.
- 1 DB-9F(DCE) RS232 service port and one 10 base-T RJ45 Ethernet port.
- Source IP access filtering and blocking.
- 3 active Telnet sessions. Menu driven or command-in-line configuration setup.
- Embedded Web server enables user to easily change settings, view or alter system status.
- Integrated SNMP agent and Trap notification message capability.
- POP3/SMTP for sending and receiving emails. Via Emails, users are able to send commands, such as power reboot, or interact with user equipment.
- Dial-up modem connection via local serial port.
- Event timers for each power outlet so that an outlet is capable of executing recycling power with desired calendar date, real-time clock, and period or duty cycle.
- Administration and User level name and password protection, including user name and password authentication for Web access (64 bit encryption algorithm) or email sending.



A Snapshot of Web Browser Access



netCommander™ NPC-22/NPC2201

Dual-Function Remote Power Reboot & RS-232 Port Server

System Specifications

Item	NPC-22, NPC-2201 with AC Current Monitoring
Power Input	13 Amps Max @ 120VAC 10 Amps Max @ 220VAC
Voltage	100 – 240 VAC
Connector	1 Power Cord
AC Output Outlet	2
AC Current Draw Monitoring	Aggregated measurement of True RMS from all circuits. NPC-2201 only.
Outlet Type	NEMA 5-15
Total Load (Combine all AC outlets)	15 Amps Max @ 120VAC 13 Amps Max @ 220VAC
Physical Dimensions	5X6.75X2.5”
Console Interface – Local Master Port	1 RS232 Port. DB-9 Female DCE Data: 7 or 8 bits. Stop Bits: 1 or 2. Parity: None, Odd or Even. Flow Control: None or RTS/CTS. Baud Rate: 2400 to 115200.
Console Interface – User Console Ports	2 RS232 Ports. DB-9 Male DTE. Data: 7 or 8 bits. Stop Bits: 1 or 2. Parity: None, Odd or Even. Flow Control: None or RTS/CTS. Baud Rate: 2400 to 115200.
Network Interface	10 Based T. RJ45.
Network Protocols	ICMP, IP, TCP, DHCP, Telnet, DNS, POP3/SMTP, SNMP, HTTP, and BootP.
LED	2 Power outlet On/Off status LEDs 1 Power On/Off LED. 2 Network LEDs.
Weight	2 lbs. Shipping Weight.
Operational Temperature Environment	-13F° – 122F° (-25C° – 50C°)
Humidity	10 – 90% RH
Storage Temperature	-22F° – 140F° (-30C° – 60C°)
Safety and EMI Compliance	TUV(US) UL-60950 and FCC Class B. File No. 0749447.01