



# netBooster™ NPB-10

## 10 Port Remote Power Management and AC/Temperature Current Monitoring Systems

- 10 Power Outlets
- AC Current Monitoring/Alarming
- Temperature Sensing/Alarming
- Telnet / Web Browsing
- Emailing
- SNMP/Trap
- AutoPing/Reboot/Email Alert
- Modem Interface
- Network Security
- Local Control Port
- Standalone Timer



### Optional AC Power Cord (Power Input):



### Part #:

PC-51513-6    PC-52019-8    PC-L52019-8    PC-L62019-8    PC-7719-8

**NPB-10 Series** provides secured remote power source management operation and AC current monitoring (optional) via TCP/IP networks or local direct connection. Accessing the system is password protected at Administration level or user privilege levels. Network security includes user name and password (64-bit encrypted) authentication for Web access or sending emails. This series of system offers the most versatile access control methods in the industry for easy, quick and reliable operations.

**Power Reboot/AutoPing** – Each of power outlets is fully controllable. The AutoPing feature enables the system to constantly monitor an IP address for a remote system and executes power reboot whenever the remote system is down. Each outlet has its own thread of AutoPing operation. In addition, each power outlet can be programmed to turn on/off periodically or be scheduled per calendar and clock.

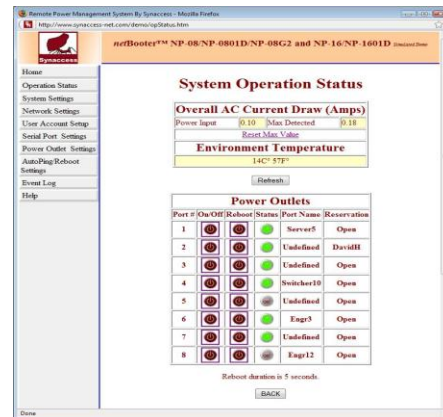
**Current Draw Monitoring** - It constantly collects aggregated True RMS current data from all power outlets. The current status is viewed from a web browser, Telnet terminals or SNMP object viewer. Alarm messages and TRAP messages will be sent or logged to a local file on the unit, if current draw passes user defined threshold.

**Temperature Monitoring and Process Control** – With a digital temperature probe (Synaccess optional part), a closed control loop can be achieved on AC outlet 1. Two Set-points allow operations more flexible and efficient.



### Features:

- Dimensions: 31-3/4" X 1-7/8" X 2-1/2"
- Handles large current equipment up to 20A @110 VAC. 13A @ 220VAC.
- AC current draw monitoring and alarming
- Temperature Sensing Input Port enables the system to measure environment temperature with an external sensing probe.
- 10 power outlets. Each power outlet is user name and password protected.
- One RS232 Master Service port and one 10 base-T RJ-45 Ethernet port.
- Autoping and power reboot for each power outlet. Email alert message if rebooting.
- Event timers for each power outlet so that an outlet can execute power recycle per calendar date, real-time clock, and period or duty cycle.
- Access IP filtering and blocking. Only specific or a group of IP addresses allowed.
- Telnet accessibility. Menu driven or command-in-line configuration setup.
- Embedded web server enables user to easily change settings, view or alter system status.
- Integrated SNMP agent and Trap notification capability.
- POP3/SMTP for sending and receiving emails. Via Emails, users are able to send commands, such as power reboot.
- Dial-up modem connection via local serial port.
- Administration and User level name and password protection, including user name and password authentication for Web access or email sending.




HTTP Web Page Snapshot



# netBooster™ NPB-10

10 Port Remote Power Management and AC/Temperature Current Monitoring Systems

## System Specifications

<b>Model</b>	<b>NPB-10</b>
<b>Power Input</b>	20 Amps
<b>Voltage</b>	110VAC (Also Support 220-240VAC)
<b>Applicable Power Inlet</b>	C20 (Applicable AC Power Cord/Plug): NEMA 5-15P, 5-20P, L5-20P, L6-20P, or CEE7/7)
<b># Of AC Output Outlets</b>	10
<b>Outlet Type</b>	NEMA 5-15 
<b>Total Load (Combine all AC outlets)</b>	20 Amps
<b>AC Current Monitoring</b>	Yes
<b>Temperature Sensing Port</b>	Digital Environment Temperature Input Port
<b>Physical Dimensions</b>	31-3/4" X1-7/8" X 2-1/2"
<b>Console Interface – Local Master Port</b>	1 RS232 Port. RJ-45 Connector. Data: 7 or 8 bits. Stop Bits: 1 or 2. Parity: None, Odd or Even. Flow Control: None or RTS/CTS. Baud Rate: 2400 to 115200.
<b>Network Interface</b>	10 Base-T. RJ-45.
<b>Network Protocols:</b>	ICMP, IP, TCP, DHCP, Telnet, DNS, POP3/SMTP, SNMP, HTTP, and BootP.
<b>Display</b>	16 Power outlet On/Off status LEDs. 2 Network LEDs. 2 digit LED Display for System with AC Current Draw Monitoring
<b>Weight</b>	8 lbs. Shipping Weight.
<b>Operational Temp. Environment</b>	-13F° – 122F° (-25C° – 50C°)
<b>Humidity</b>	10 – 90% RH
<b>Storage Temp.</b>	-22F° – 140F° (-30C° – 60C°)
<b>Safety / EMI Compliance</b>	TUV(US) UL-60950 and FCC Class A. File No. 0749447.01