



netBooster™ NP-16 (NP-1601D/ NP-1601DH/NP-16A20/NP-16A30) 16 Port Remote Power Management and AC Current Monitoring Systems

- 16 Power Outlets
- AC Current Monitoring/Alarming
- Temperature Sensing/Alarming
- Telnet
- Web Browsing
- Emailing
- SNMP/Trap
- AutoPing/Reboot/Email Alert
- Modem Interface
- Network Security
- Local Control Port
- Standalone Timer



NP-16 Series provides secured remote power source management operation and AC current monitoring (optional) via TCP/IP networks or local direct connection. Accessing the system is password protected at Administration level or user privilege levels. Network security includes user name and password (64-bit encrypted) authentication for Web access or sending emails. This series of system offers the most versatile access control methods in the industry for easy, quick and reliable operations.

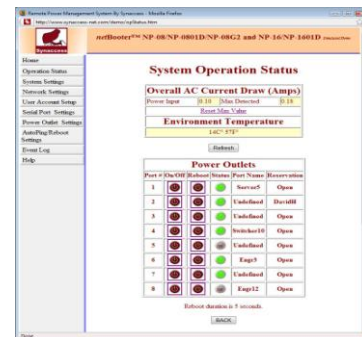
Power Reboot - The 16 power outlets are fully controlled via Telnet, Web, SNMP, emailing, local or via external Modem. The AutoPing feature enables the system to constantly monitor an IP address for a remote system and executes power reboot whenever the system is down. Each outlet has its own thread of AutoPing operation. In addition, each power outlet can be programmed to turn on/off periodically or be scheduled per calendar and clock.

Current Draw Monitoring (NP-1601D) - It constantly collects aggregated True RMS current data from all power outlets. The current status is viewed from a web browser, Telnet terminals or SNMP object viewer. Alarm messages and TRAP messages will be sent or logged to a local file on the unit, if current draw passes user defined threshold.

Security - Accessing the system is password protected at Administration level or user privilege levels. Network security includes user name and password authentication (64-bit encryption algorithm) for Web access or sending emails. NP-16 Series offers the most versatile access control methods in the industry for easy, quick and reliable operations.

Features:

- Standard 19" 2U chassis. 6" in depth.
- Handles large current equipment up to 30A @110 VAC. 20A @ 220VAC.
- AC current draw monitoring and alarming (NP-1601D).
- 16 power outlets. Each power outlet is user name and password protected.
- One RS232 Master Service port and one 10 base-T RJ-45 Ethernet port.
- Autoping and power reboot for each power outlet. Email alert message if rebooting.
- Event timers for each power outlet so that an outlet can execute power recycle per calendar date, real-time clock, and period or duty cycle.
- Access IP filtering and blocking. Only specific or a group of IP addresses allowed.
- Telnet accessibility. Menu driven or command-in-line configuration setup.
- Embedded web server enables user to easily change settings, view or alter system status.
- Integrated SNMP agent and Trap notification capability.
- POP3/SMTP for sending and receiving emails. Via Emails, users are able to send commands, such as power reboot.
- Dial-up modem connection via local serial port.
- Administration and User level name and password protection, including user name and password authentication for Web access or email sending.



HTTP Web Page Snap-Shot



netBooster™ NP-16 (NP-1601D/ NP-1601DH/NP-16A20/NP-16A30)
16 Port Remote Power Management and AC Current Monitoring Systems

System Specifications

Item	NP-16 (Dual Cord)	NP-1601D (Dual Cord)	NP-1601DH (Dual C14)	NP-16A30 (Single Cord)	NP-16A20 (Single Cord)
Power Input	30 Amps	30 Amps	20 Amps	30 Amps	20 Amps
Voltage	110VAC (Also Support 220VAC)		220VAC	110VAC (Also Support 220VAC)	
Connector(s)	2 NEMA 5-15P Plugs 		2 C14s 	1 NEMA L5-30P Plug 	1 NEMAL5-20P Plug 
# Of AC Output Outlets	16				
Outlet Type	NEMA 5-15 		C13 	NEMA L5-20P 	NEMA L5-20P 
Total Load (Combine all AC outlets)	30 Amps	30 Amps	20 Amps	30 Amps	20 Amp
AC Current Monitoring	None	Yes	Yes	No	No
Physical Dimensions	19" X3.2" X 6.25" (19"-2U)				
Console Interface – Local Master Port	1 RS232 Port. RJ-45 Connector. Data: 7 or 8 bits. Stop Bits: 1 or 2. Parity: None, Odd or Even. Flow Control: None or RTS/CTS. Baud Rate: 2400 to 115200.				
Network Interface	10 Base-T. RJ-45.				
Network Protocols:	ICMP, IP, TCP, DHCP, Telnet, DNS, POP3/SMTP, SNMP, HTTP, and BootP.				
Display	16 Power outlet On/Off status LEDs. 2 Network LEDs. 2 digit LED Display for System with AC Current Draw Monitoring				
Weight	8 lbs. Shipping Weight.				
Operational Temp. Environment	-13F° – 122F° (-25C° – 50C°)				
Humidity	10 – 90% RH				
Storage Temp.	-22F° – 140F° (-30C° – 60C°)				
Safety / EMI Compliance	TUV(US) UL-60950 and FCC Class A. File No. 0749447.01				

Customer Specific Requirements: Please call for your application specific requirements.