



netBooter™ NP-02 and NP-02H Remote Power Management system



- 2 Power Outlets
- Access IP Filtering
- Telnet
- Web Browsing
- Emailing
- SNMP/Trap
- Auto Ping & Reboot
- Modem Interface
- Network Security
- Local control Port
- Standalone Timer

NP-02 provides secured remote power source management operation and AC current monitoring (optional) via TCP/IP networks or local direct connection. Accessing the system is password protected at Administration level or user privilege levels. Network security includes user name and password (64-bit encrypted) authentication for Web access or sending emails. NP-02 offers the most versatile access control methods in the industry for easy, quick and reliable operations.

Power Reboot - The two power outlets are fully controlled via Telnet, Web, SNMP, emailing, local or via external Modem. The AutoPing feature enables the system to constantly monitor an IP address for a remote system and executes power reboot whenever the remote system is down. Each outlet has its own thread of AutoPing operation. In addition, each power outlet can be programmed to turn on/off periodically or be scheduled per calendar and clock.

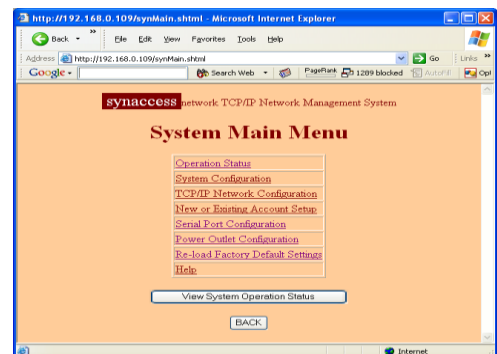
Security - Accessing the system is password protected at Administration level or user privilege levels. Network security includes user name and password authentication (64-bit encryption algorithm) for Web access or sending emails. NP-02(R) offers the most versatile access control methods in the industry for easy, quick and reliable operations.



Mounting Brackets (RM1UB, Optional Parts)

Features:

- Rugged small enclosure: 5.40"x1.75"x6.15".
- Handles large current equipment up to 13A @120VAC and 10A @220 VAC
- 2 power outlets. Each power outlet is user name password protected.
- One DB-9F(DCE) RS232 service port and one RJ45 Ethernet port.
- Auto ping and power reboot for each power outlet.
- Event timers for each power outlet so that an outlet is capable of executing recycling power with desired calendar date, real-time clock, and period or duty cycle.
- Source IP access Filtering and Blocking
- Telnet accessibility. Menu driven or command-in-line configuration setup.
- Embedded Web server enables user to easily change settings, view or alter system status.
- Integrated SNMP agent and Trap notification capability.
- POP3/SMTP for sending and receiving emails. Via Emails, users are able to send commands, such as power reboot.
- Dial-up modem connection via local serial port.
- Administration and User level name and password protection, including user name and password authentication for Web access or email sending.



A Snapshot of Web Browser Access



netBooter™ NP-02 and NP-02H Remote Power Management system

System Specifications

Item	NP-02	NP-02H
Power Input	13 Amps Max	10 Amps Max
Voltage	110VAC (Also Support 220VAC)	220VAC
Connector	IEC-320 C14	IEC-320 C14
AC Output Outlet	2	
AC Current Draw Monitoring	No	
Outlet Type	NEMA 5-15	IEC-320 C13
Total Load (Combine all AC outlets)	13 Amps Max @ 120VAC	10 Amps Max @ 220VAC
Physical Dimensions	5.40X1.75X6.15"	
Console Interface – Local Master Port	1 RS232 Port, female. Data: 7 or 8 bits. Stop Bits: 1 or 2. Parity: None, Odd or Even. Flow Control: None or RTS/CTS. Baud Rate: 2400 to 115200.	
Network Interface	10 Based T. RJ45.	
Network Protocols	ICMP, IP, TCP, DHCP, Telnet, DNS, POP3/SMTP, SNMP, HTTP, and BootP.	
LED	2 Power outlet On/Off status LEDs, 1 Power On/Off LED. 1 Network LEDs.	
Weight	2 lbs. Shipping Weight.	
Operational Temperature Environment	-13F° – 122F° (-25C° – 50C°)	
Humidity	10 – 90% RH	
Storage Temperature	-22F° – 140F° (-30C° – 60C°)	
Safety and EMI Compliance	Yes. TUV(US), UL-60950, FCC Class B	