



NC-16 TCP/IP Remote Console Port Server System

- 16 User Console Port Mux
- Access IP Filter/Blocking
- Telnet/HTTP Access
- Modem Interface
- User ID and Password for Each Port
- Local control



NC-16 provides secured remote in-band and/or out-of-band access to 1 of 16 selected RS232 console ports via TCP/IP networks, local direct connection or dial-up modem.

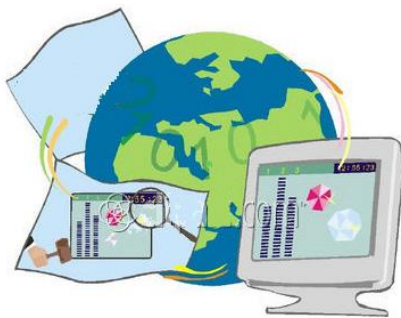
Serial console ports are typically equipped on UNIX servers, switches/routers, and other communication equipment. Accessing your equipment serial ports via a NC-16 system is password protected at administration level or user privilege levels. Each user serial port can be reserved for a user with user ID and password so unauthorized personnel is denied for accessing the port.

Application data is transparently and bi-directionally transmitted. Tenet, local Terminal (via Master Serial Port) is used for the system configuration and communication.

Features:

- Durable Standard 19"/1U shelf chassis, 4.25" in depth.
- 16 RS232 user console ports. Each console port is user name password protected.
- 1 (DCE) RS232 Master Service port and one 10 base-T RJ-45 Ethernet port.
- **Access IP address Control** – IP address filtering and blocking so that only authorized client IP address can access the system.
- Embedded Web server for user to easily change settings and view system status.
- **Telnet** accessibility. Menu driven or command-in-line configuration setup from Master control port (TCP port or local Master serial port).
- **Dial-up modem** connection via local serial port.
- Administration and User level name and **password** protection, including user name and password authentication for Web access or sending emails.
- An AC power adapter is included.

A Snapshot of User Interface for Configuration



```
*****
*
* Main Menu
*
*****
>
1) Setup System
2) Setup TCP/IP Network
3) Configure Serial Console Port
4) Setup New or Existing Accounts
5) Reload Factory Defaults
s) Save Settings
q) Quit
>Please enter your selection:
```



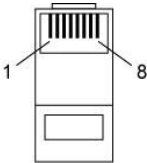
NC-16 TCP/IP Remote Console Port Server System

System Specifications

Item	NC-16
Power Input	6VDC, 300mA.
Physical Dimensions	19" X 1.5" X 4.25" (19"-1U)
Console Interface – Local Master Port	1 RS232 Port. RJ-45 Connector. Data: 7 or 8 bits. Stop Bits: 1 or 2. Parity: None, Odd or Even. Flow Control: None or RTS/CTS. Baud Rate: 1200 to 115200.
Console Interface – User Console Ports	16 RS232 Ports. RJ-45 Connector. Data: 7 or 8 bits. Stop Bits: 1 or 2. Parity: None, Odd or Even. Flow Control: None. RTS and CTS hardwired. Baud Rate: 1200 to 115200.
Network Interface	10 Base-T. RJ45.
Network Protocols	ICMP, IP, TCP, DHCP, Telnet, DNS, HTTP, and BootP.
LED	16 user console port LEDs 1 Power On/Off LED. 2 Network LEDs.
Weight	4 lbs, shipping weight
Operational Temperature Environment	32F° – 122F° (0C° – 50C°)
Humidity	10 – 90% RH
Storage Temperature	-20F° – 140F° (-29C° – 60C°)

RS-232 — RJ45 (8-pin)
C-RJ45-DB9F-4, RJ-45 to RS232 (Female, DCE) cable, 4'.

RS232 DB9 Female		RJ45 (8-pin)	
Pin #	Signal	Pin #	Signal
1	DCD	1	DSR
2	TxD	2	RTS
3	RxD	3	GND
4	DSR	4	TxD
5	GND	5	RxD
6	DTR	6	DCD
7	CTS	7	CTS
8	RTS	8	DTR
9	---		



RS-232 — RJ45 (8-pin)
C-RJ45-DB9M-4, RJ-45 to RS232 (Male, DTE) cable, 4'.

RS232 DB9 Male		RJ45 (8-pin)	
Pin #	Signal	Pin #	Signal
1	DCD	1	DSR
2	RxD	2	RTS
3	TxD	3	GND
4	DTR	4	TxD
5	GND	5	RxD
6	DSR	6	DCD
7	RTS	7	CTS
8	CTS	8	DTR
9	---		

